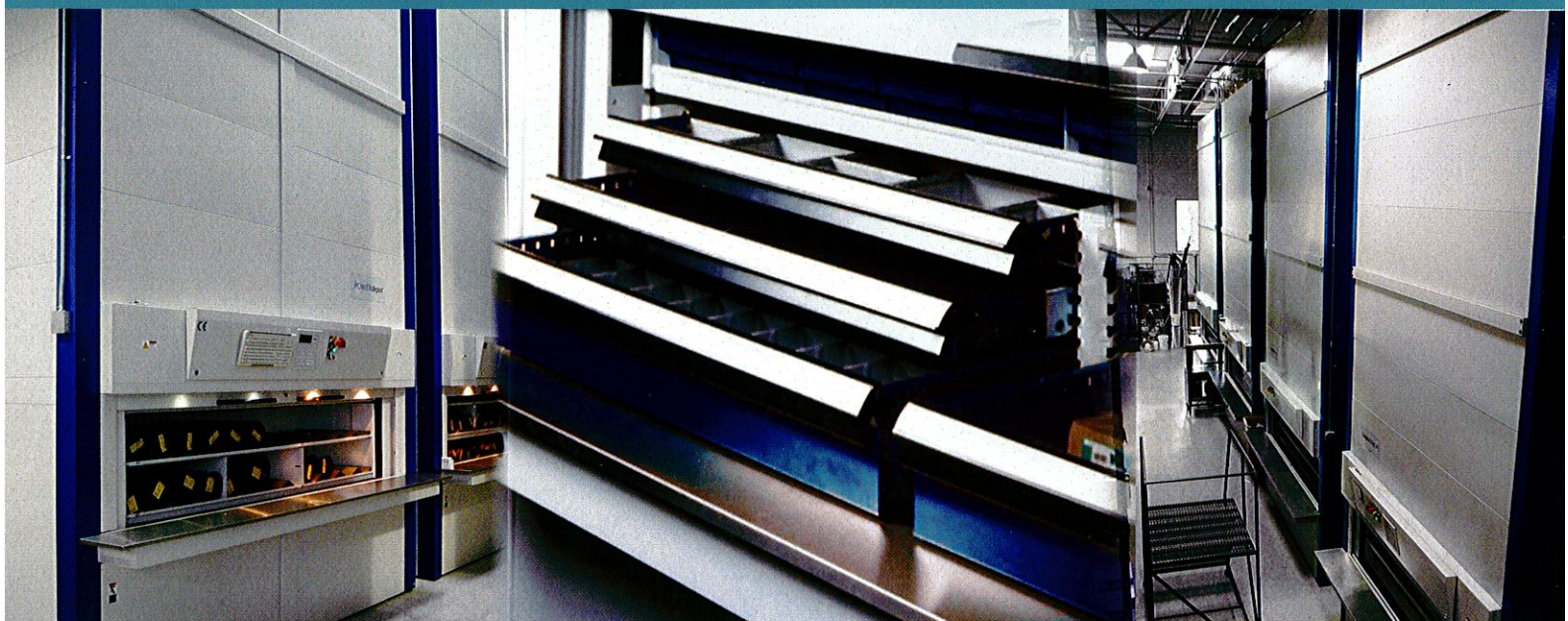


▶ USA

POWERdepot
Vertical Carousel



Technology becomes simplicity

SYSTEM 
Logistics



DO YOU WANT TO SAVE TIME, SPACE AND MONEY?

The **POWERdepot™** is our leading edge vertical carousel storage and retrieval system that maximizes space utilization, efficiency and productivity in all types of applications.

- Engineered for safe and reliable operation, the innovative features of the **POWERdepot™** put it far ahead of conventional vertical carousels
- Dual-chain guidance technology with 8-fold suspension arm system for optimized load

balancing, lower maintenance costs, maximized cube and carrier capacity of up to 2,200 lbs.

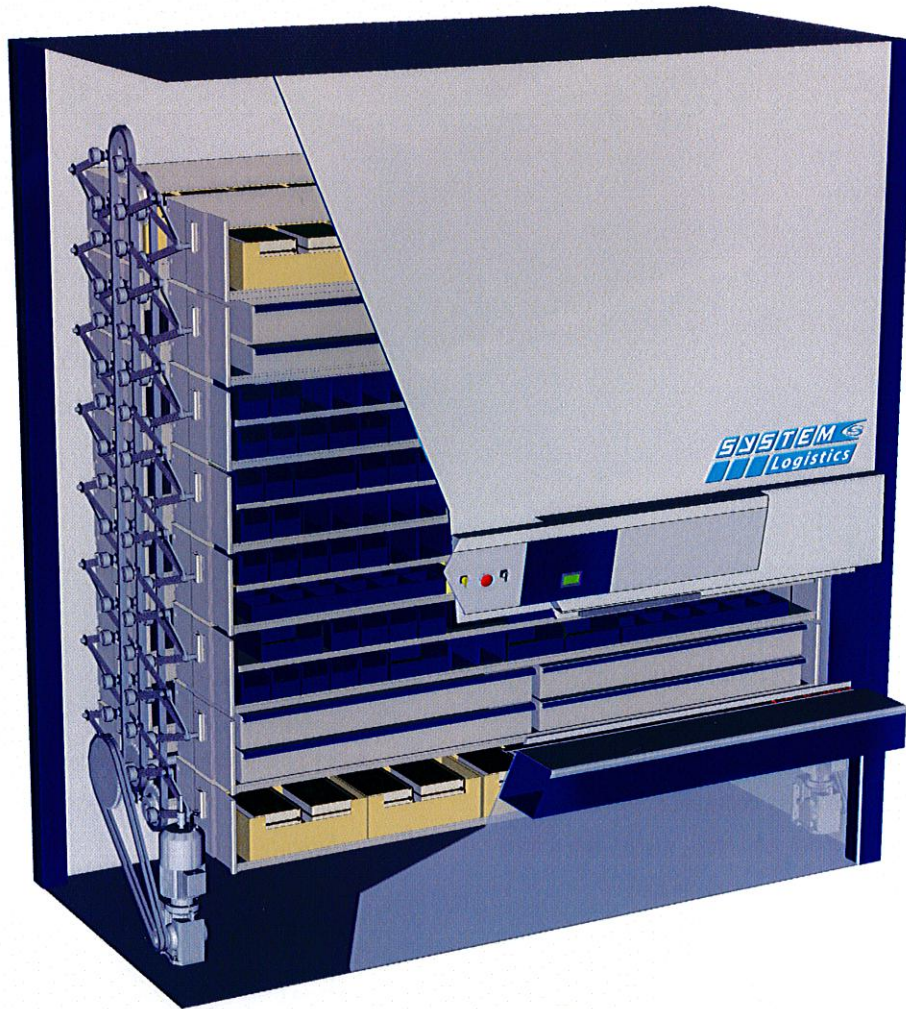
- Limitless carrier configurations up to 19' wide and options including pullout drawers, shelves, dividers, inserts, automatic door systems, clean room and cold room units, as well as custom and application-specific carriers
- Dual-motor drive enables greater width

capabilities and provides redundancy for continuous up-time

- State-of-the-art safety features like personnel and product protection, light curtains, e-stops, and motor overload sensors
- Dual-access option for versatile multi-operator use, both front and rear or on multiple floors



The Vertical Carousel Advantage: MAXIMIZED



Up to 19' wide, carriers may include dividers, inserts, pullout drawers, shelves or even custom configurations to meet the needs of your application.

■ REMOVEABLE SIDE AND LOWER ACCESS PANELS

Easy access to drives, motors and other mechanical components for maintenance and repair

■ FOOT/SHOE CARRIER DESIGN

Provides quick and easy installation of all carriers

■ OPTIMIZED LOAD BALANCING

Dual-chain guidance system with 8-fold suspension arm optimizes load balancing and minimizes maintenance costs

■ DUAL-CHAIN DRIVE SYSTEM

Dual-chain eliminates the need for troublesome track type guidance systems

■ PRODUCT PROTECTION

Enclosed dust cover panel system minimizes dust and particulates in product storage area, reducing housekeeping requirements

■ EASY-TO-USE OPERATOR INTERFACE

Operator interface provides control and security and can be customized for each individual user

■ ADVANCED SAFETY FEATURES

State-of-the-art safety features like the e-stop and safety light curtain minimize injury and protect product from damage

■ LOCKING BI-PARTING DOORS

Doors can be closed and locked between shifts to protect against theft and damage

■ STANDARD STAINLESS STEEL WORK COUNTER

12" deep work counter provides work area for operator

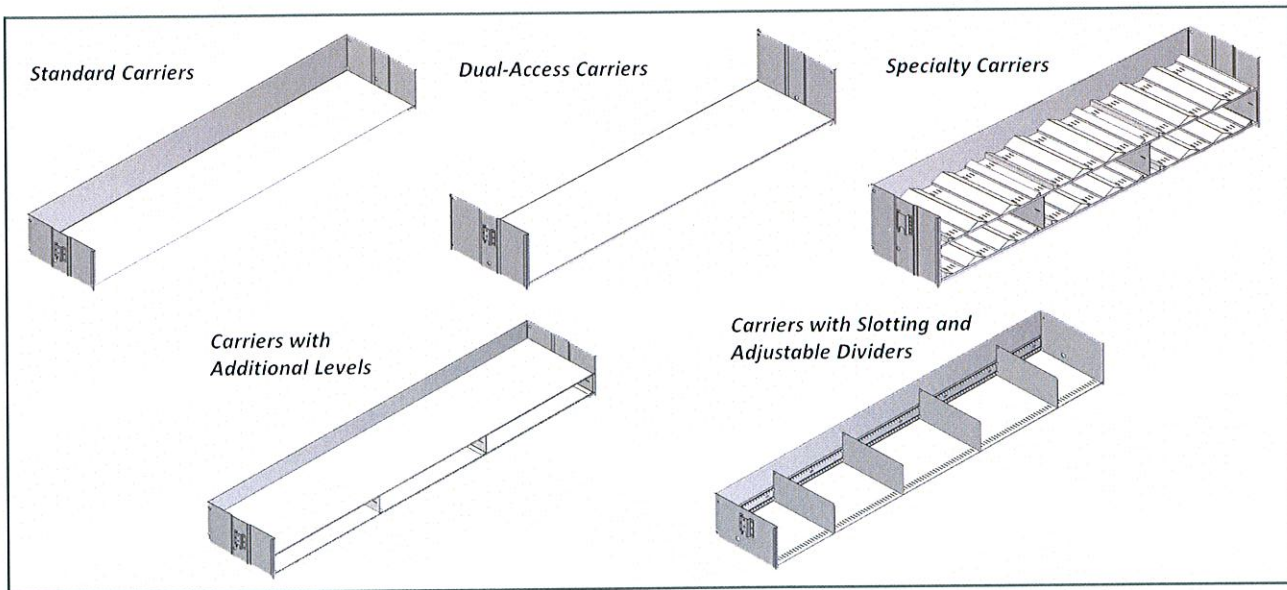
■ HINGED CONTROL HOUSING

Provides safe environment for unit controls

■ PERSONNEL PROTECTION

Safety light curtains within the operator access opening protect users from machine movement at all times

Carriers for Any Application



With the **POWERdepot™**, System Logistics Corp. has taken all of the benefits of vertical carousel technology and powered them up to the next level!

PRODUCTIVITY

- Materials are delivered directly to operator, minimizing walking, climbing, bending or reaching for heavy objects
- Pass-through design eliminates time consuming transport of items from floor to floor 100% out-of-balance capability provides trouble-free picking with no need to redistribute carrier loads
- Point-of-use design keeps parts closer to the operation, eliminating trips to cribs or stock rooms.
- Productivity increases more than 2.5 times over static solutions

SPACE UTILIZATION

- All available vertical height is utilized, reducing floor space requirements
- Under-used racks, shelves and drawer cabinets are eliminated
- Aisles are cleared of clutter
- Carriers can include shelves, dividers, 100% extendable pull-out drawers and drawer divider systems to create discrete storage locations within a single carrier

SAFETY & ERGONOMICS

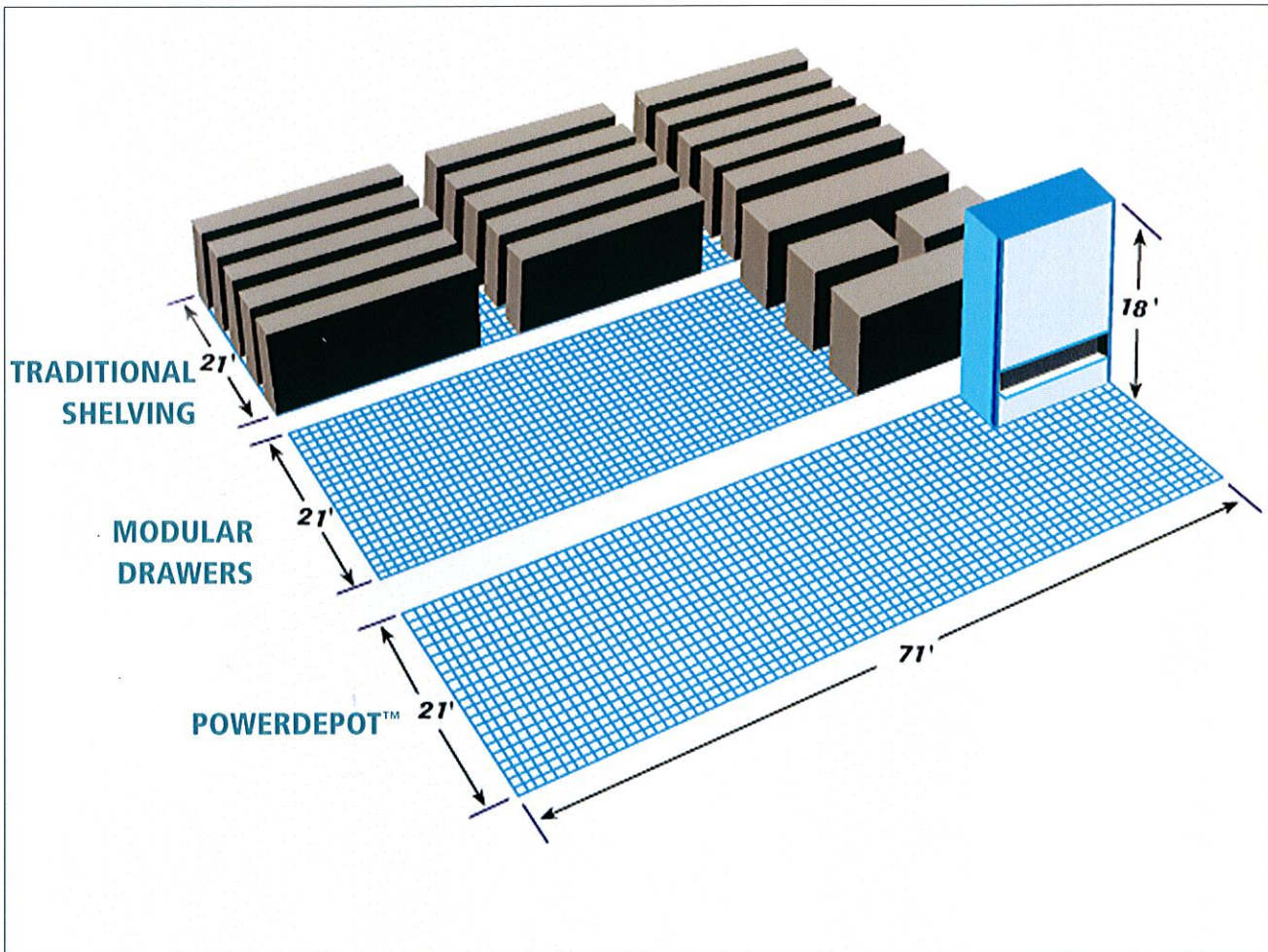
- No more risk of injury from climbing up and down ladders to retrieve heavy or bulky boxes
- All materials are delivered to operators at an ergonomically correct waist-high position, reducing potential for back injuries
- Standard 12" work counter enables picking while product is out of carrier, or can provide a place to rest product while waiting to be loaded
- Parts are protected from particulates inside a fully enclosed system

CONTROL

- Pick product by carrier number or part number
- Shortest path retrieval system speeds picking efficiency
- Host interface capability for advanced inventory management and control
- Manual carrier jog buttons to override automated machine control
- Organized storage of raw material and finished product is possible within the same unit
- Lockable front doors provide additional security by allowing doors to be closed and locked between shifts



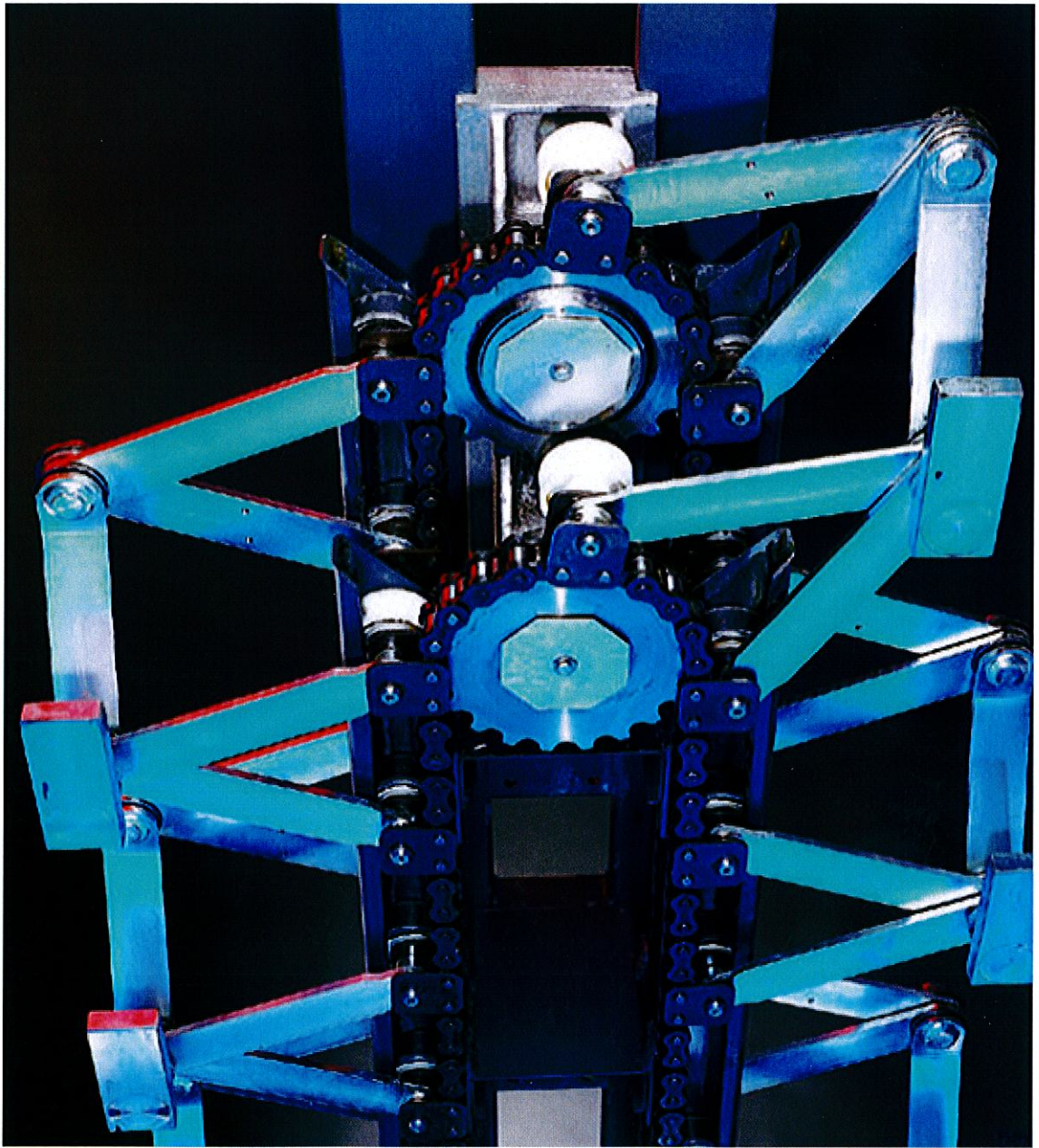
Space Savings



* Unit performance is dependent on the configuration selected.

*Minimized footprint, maximized efficiency. The **POWERdepot™** provides the same amount of storage space as several rows of traditional shelving or modular drawers... yet saves over 1,400 sq. ft. of valuable floor space.*

Dual-Chain Guidance Technology



INDUSTRY EXCLUSIVE

Unlike other vertical carousels with troublesome straight or curved track guidance systems, the **POWERdepot's™** exclusive dual-chain technology with 8-fold suspension offers smooth, stable performance with virtually no tilting or lateral deviation.

The carousel can handle up to 100% unbalanced loads, so carrier profiling is always determined by the operator, not the restrictions of the carousel capacity. Plus, with dual-chain technology, the **POWERdepot™** can accommodate

multiple carrier clear heights, widths and depths (up to 55"), enabling maximized cube utilization and a maximum carrier capacity of up to 2,200 lbs. Its reliable, stable operation means reduced long-term maintenance costs.



Message Directed Picking

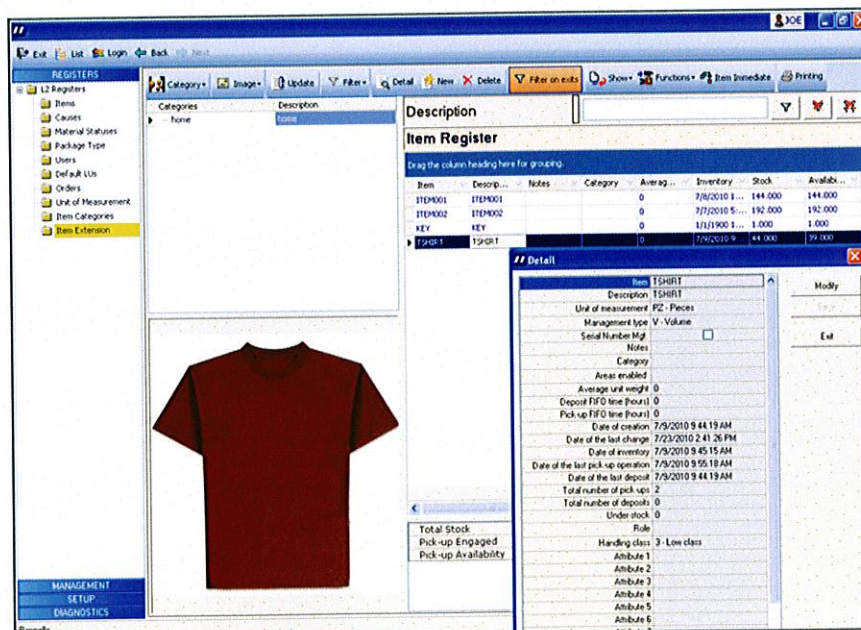
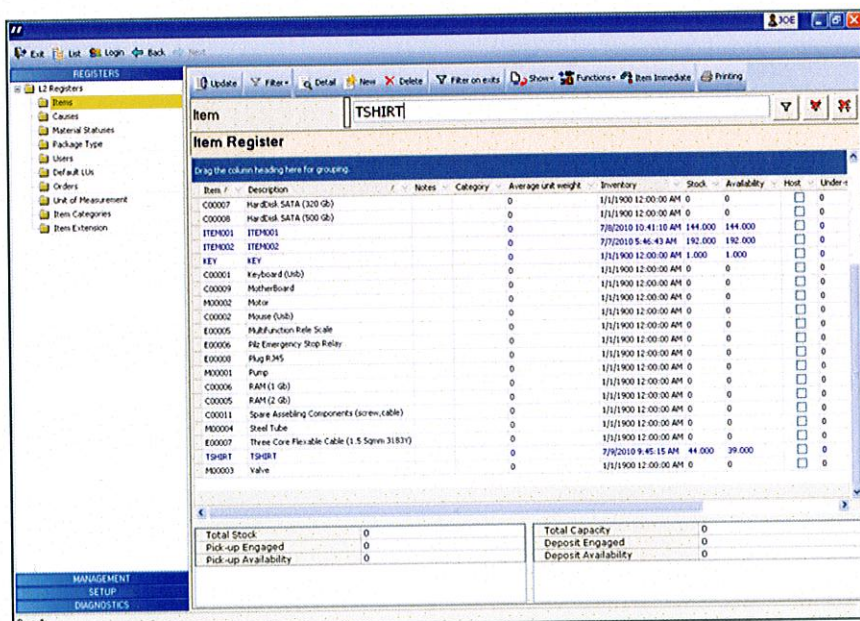


INCREASE PICKING ACCURACY AND TIME

The System Logistics Digital Display Message Center is a display system that is seamlessly integrated into the carousel's access opening area and is available for all **POWERdepot™** Vertical Carousels.

The Digital Display Message Center provides operator prompting from the carousel's onboard controls platform, communicating to the System Logistics' software by receiving order information sent from a client's host network.

Operator messaging can include, but is not limited to displaying the following: item part number, description, quantity to pick or put, location within the carrier and specific notes about the materials. All of these displays ensure an efficient and accurate picking environment and add to the overall usefulness of the carousel system.



DIAMONDWARE SOFTWARE SUITE

DIAMONDWARE is a suite of software designed to meet the various operational requirements in a large variety of picking and order fulfillment applications. The combination of available modules allows the package to be tailored to your specific applications.

- **WES (Warehouse Execution System)**
Optimizes labor and equipment in the warehouse
- **PowerPick** Manages split case order picking
- **Direct Pick** Manages order picking via pick-to-light, voice picking and RF picking
- **AutoPick** Manages your automated storage and retrieval systems, like automatic

- insertor/extractors and stacker cranes
- **AutoRoute** Tracks your orders throughout your material handling system from just one interface
- **Modula WMS Base** Manages inventory in the MODULA VLM, the POWERdepot VC and other automated storage devices

Clean Room Units



/// CLEANROOM SOLUTIONS

- Internal airflow regulating system adjusts air pressure and flow inside the unit
- Automatic bi-parting doors available to maintain clean room integrity and protect against contamination when product enters or leaves the unit
- Enclosed drive motor and dual-chain guidance system minimize the contaminated air entering the clean product storage area
- Designed to SEMI safety and ergonomic standards
- Self-contained clean room carousels are third party certified to Class 100
- May be designed to operate in existing clean rooms with a range from Class 100K to Class 1
- Carriers may be designed for future automated induction
- Carriers may be perforated or designed with open bottom to allow air to flow through unit

Proven in Demanding Applications Worldwide



MANUFACTURING PROTECTIVE CLOTHING

Maker of protective clothing uses two POWERdepot™ carousels, each with control stations at the front and rear. Two operators can work simultaneously at one carousel with minimal delay. Drawers can be completely pulled out of the carrier, enabling one operator to assemble components while the other is operating the carousel.

STORAGE OF WORK-IN-PROCESS MATERIALS

Automobile manufacturer uses POWERdepot™ to store WIP goods for the manufacture of prototype seats. This configuration was also designed to hold upholstery samples or full rolls of carpet.

STORAGE AND TRANSPORT BETWEEN FLOORS

Two-floor high POWERdepot™ increases efficiency for a manufacturer of custom fiberglass-reinforced concrete window ledges. Product is placed in carriers on ground floor and removed for finishing on upper floor. Carrier can be inserted or removed over a roller conveyor. A lifting station is used to compensate for stopping tolerances.

STORAGE OF PREPREGS FOR PRINTED CIRCUIT BOARDS

Well-known computer manufacturer uses three POWERdepot™ carousels to store prepregs at precisely defined temperature and humidity storage conditions. The carousels have control stations at the front and rear.

STORAGE OF SMALL PARTS AND TOOLING

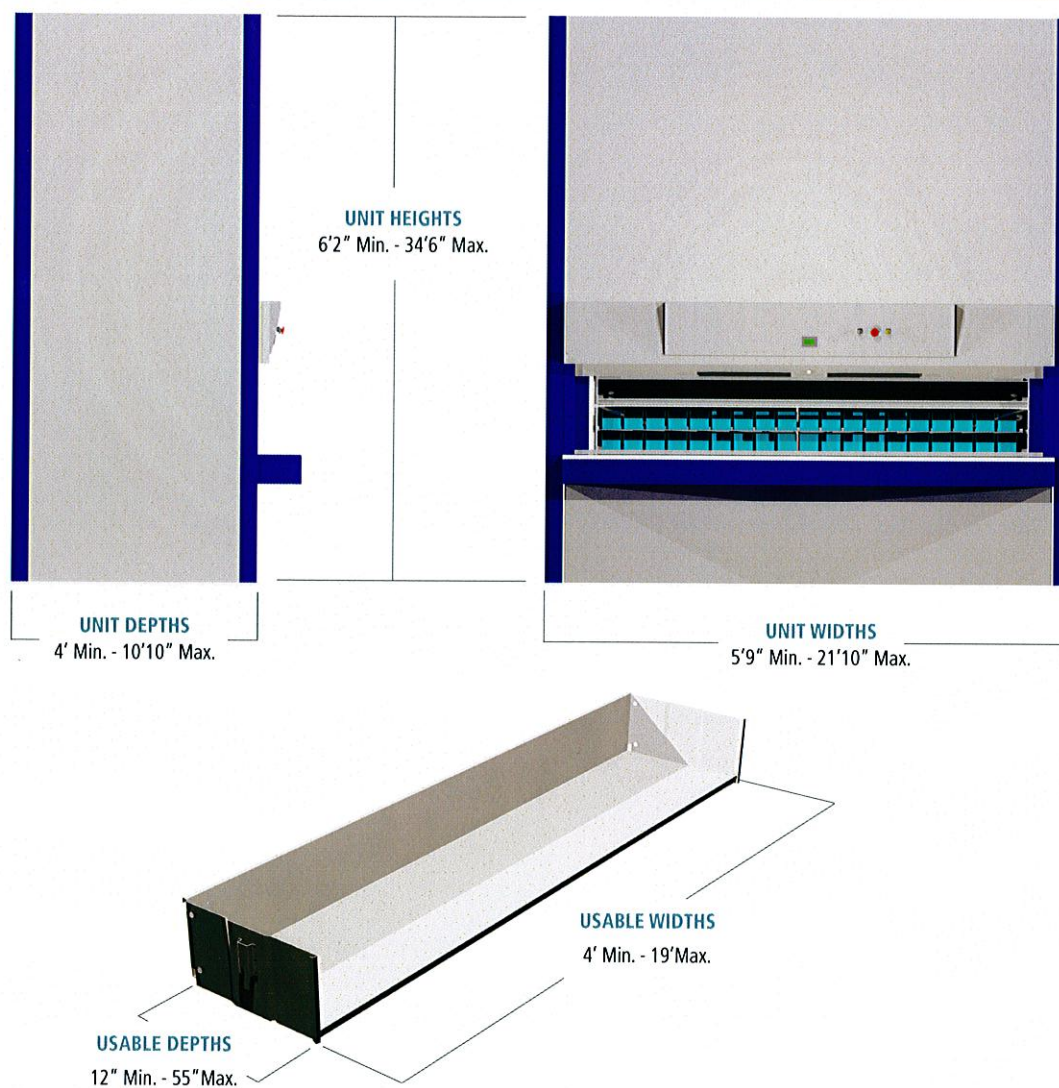
Leading automobile manufacturer uses the POWERdepot™ to keep parts and tooling on hand in the maintenance garage.

WIRE ROLL STORAGE

An industry leading e-commerce electronics seller store smaller, full reels of wire withing the carriers using special corner profiles to negate reel movement and keep the items easy to acces.



Unit Specifications and Ranges



LOAD CAPACITIES

UNIT LOAD CAPACITIES

Model 45 Units:	7,950 Lbs.
Model 70 Units:	11,925 Lbs.
Model 75 Units:	13,250 Lbs.
Model 120 Units:	22,100 Lbs.
Model 160 Units:	29,800 Lbs.
Model 200 Units:	6,425 Lbs.

CARRIER LOAD CAPACITIES

Model 45 Units:	330 Lbs.
Model 70 Units:	550 Lbs.
Model 75 Units:	660 Lbs.
Model 120 Units:	1,102 Lbs.
Model 160 Units:	1,653 Lbs.
Model 200 Units:	2,200 Lbs.

UNIT IMBALANCE LOADS:

Model 45 Units:	Even No. Carriers=	100%:	3,975 Lbs
Model 70 Units:	Even No. Carriers=	100%:	5,962 Lbs.
Model 75 Units:	Even No. Carriers=	100%:	6,625 Lbs
Model 120 Units:	Even No. Carriers=	100%:	11,050 Lbs.
Model 160 Units:	Even No. Carriers=	80%:	11,920 Lbs.
Model 200 Units:	Even No. Carriers=	60%:	11,920 Lbs.

SYSTEM LOGISTICS

POWERdepot™ Vertical Carousel

SYSTEM LOGISTICS CORPORATION

90 Alfred A. Plourde Parkway

Lewiston, ME 04241

Tel. 1 888 233 6796

Fax 1 207 786 0271

sales@systemlogistics.com

www.systemlogistics.com

